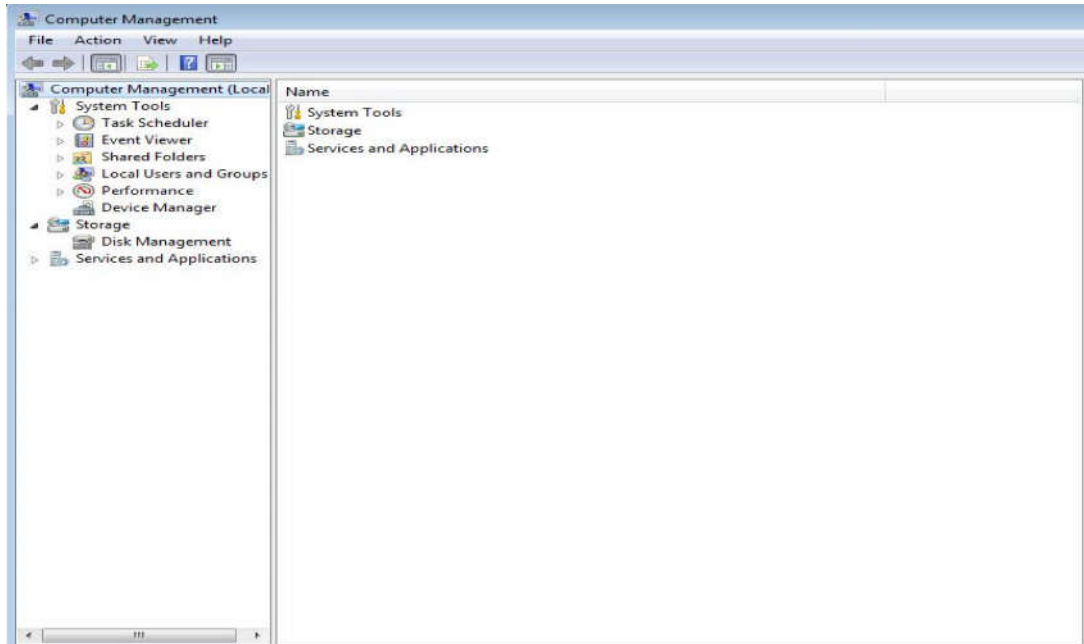


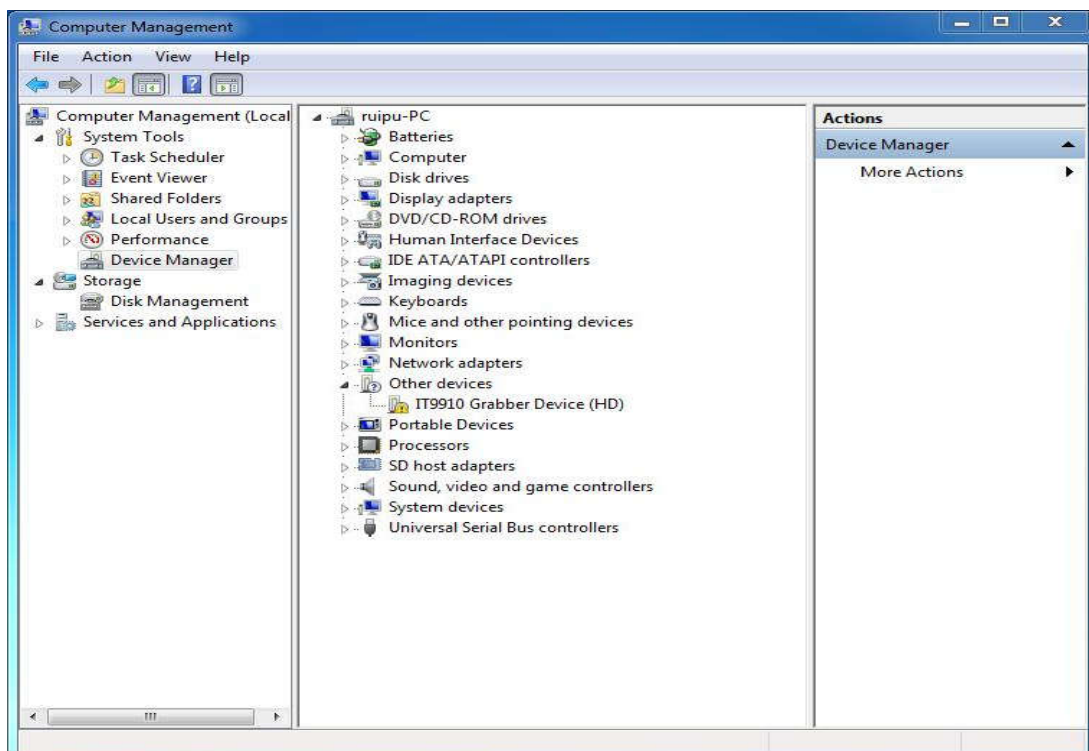
INSTALLATION INSTRUCTION

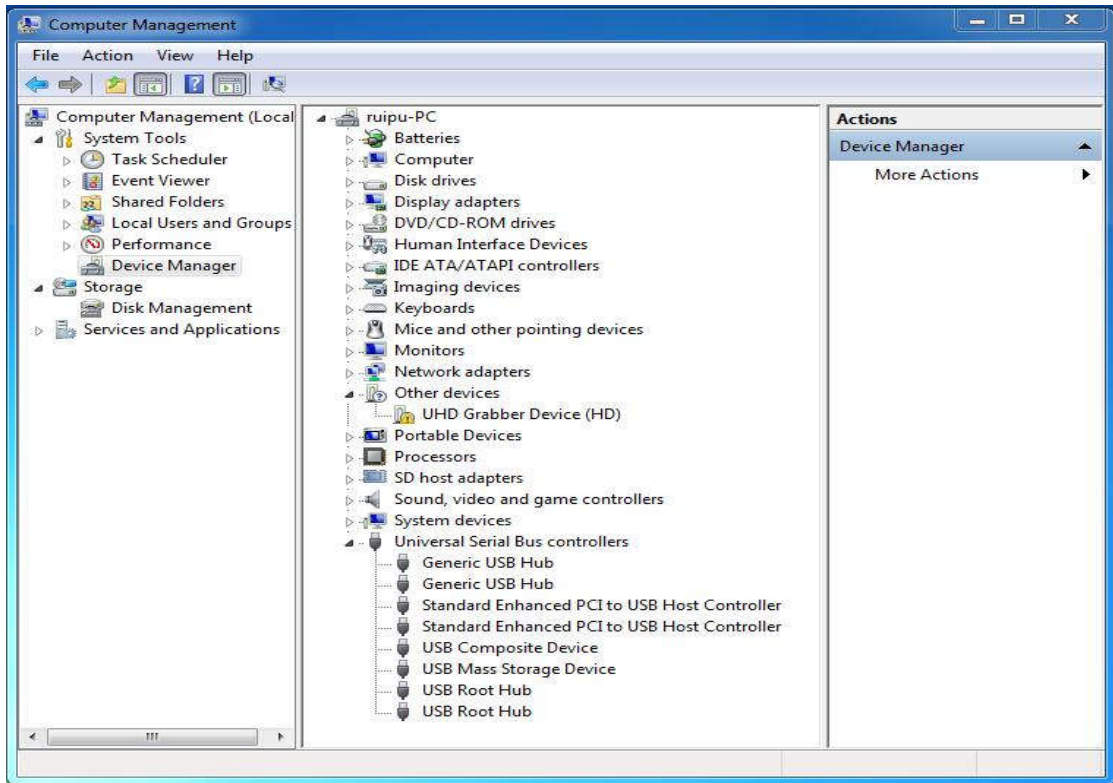
一、Driver install:

- Connect the box to PC USB port
- Right click “Computer Management”



- Under “Device Manager” to choose “Other devices” then “IT9910 Grabber Device(HD)” or UHD Grabber Device(HD) (if no such device pls change PC USB port)





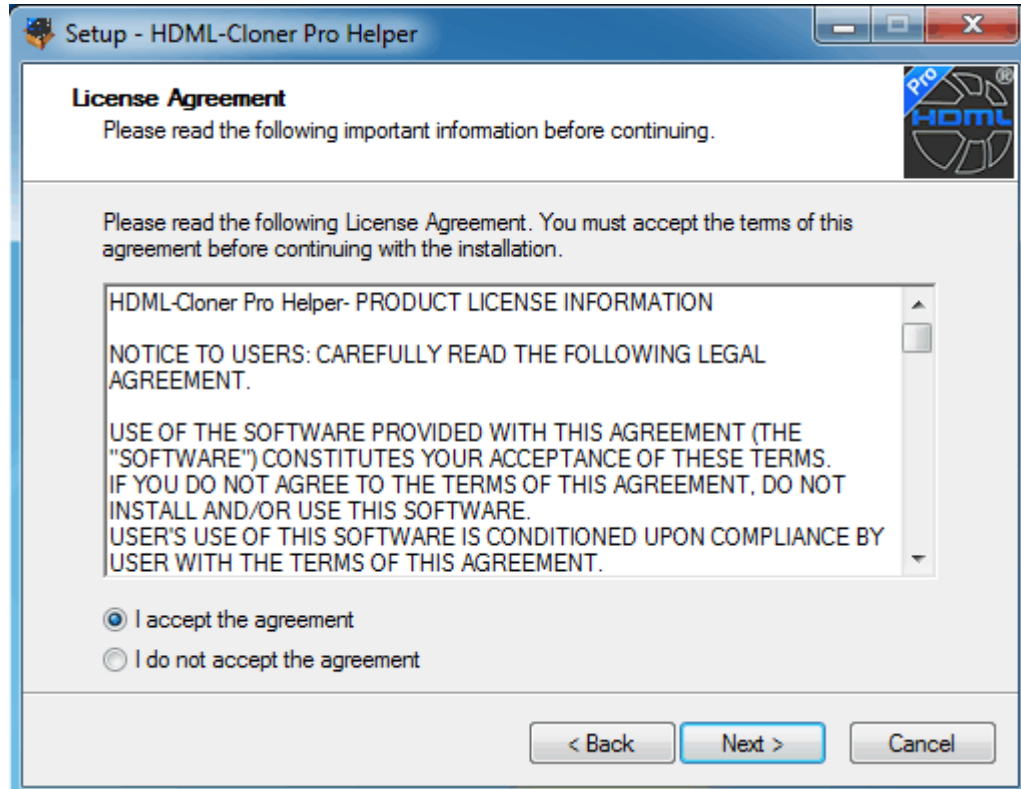
- Run the disk to Run HCW_auto.exe



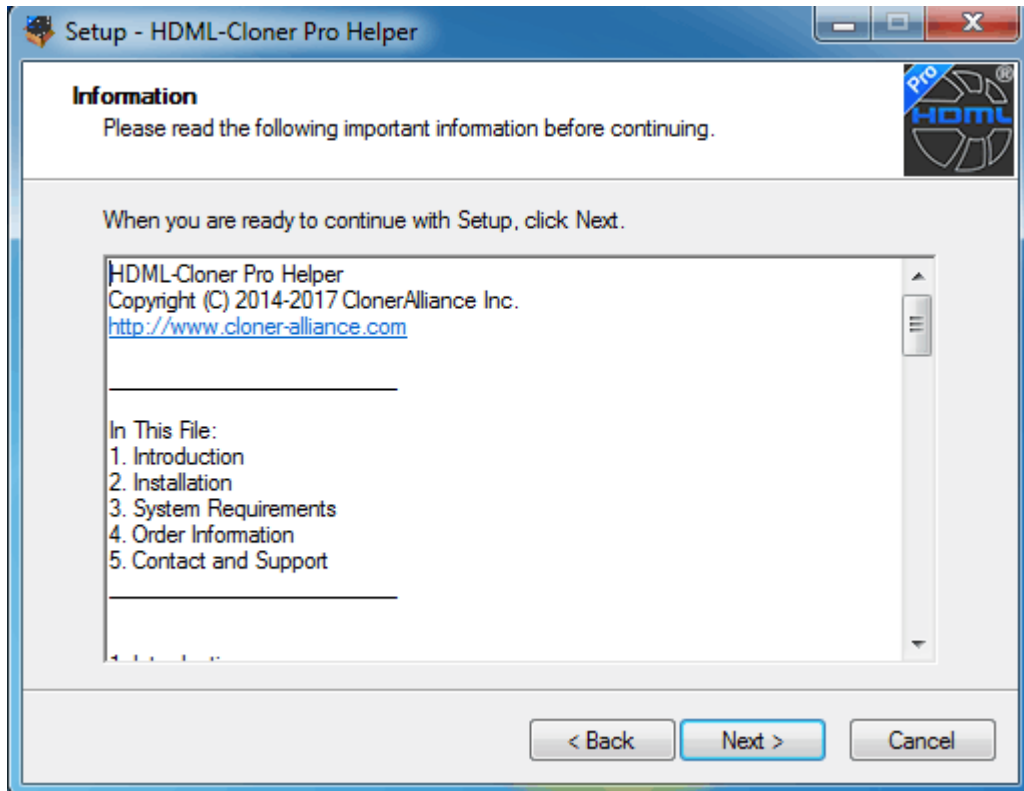
- Install Driver & Application Software



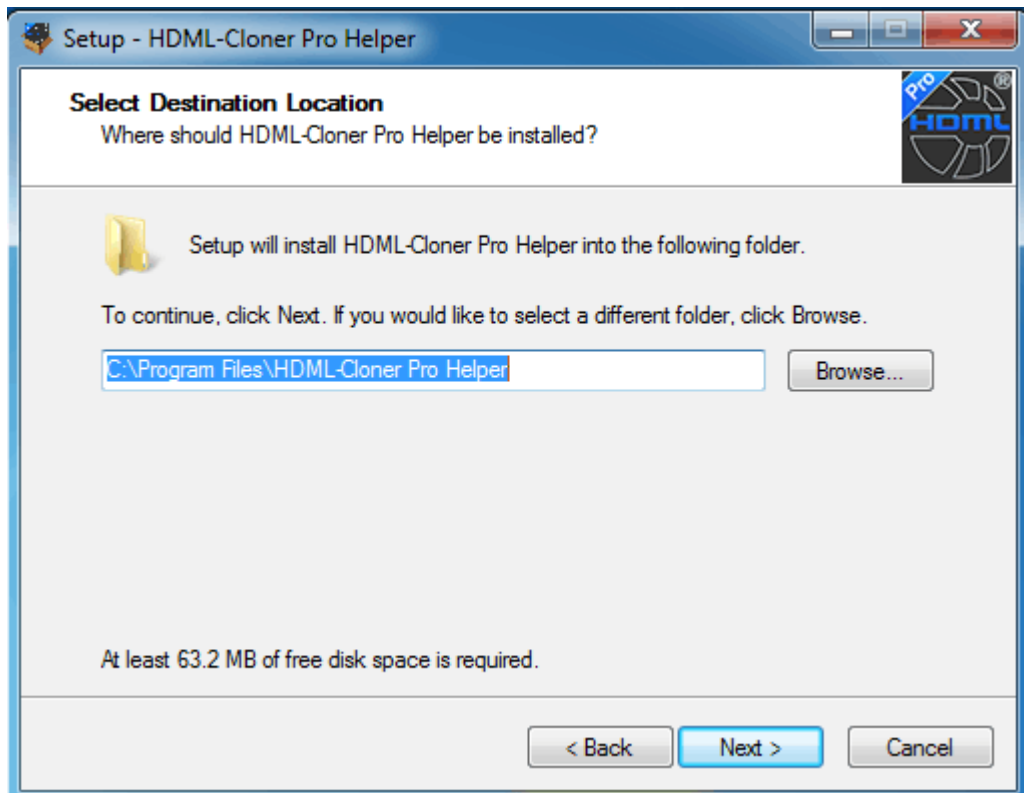
- Next



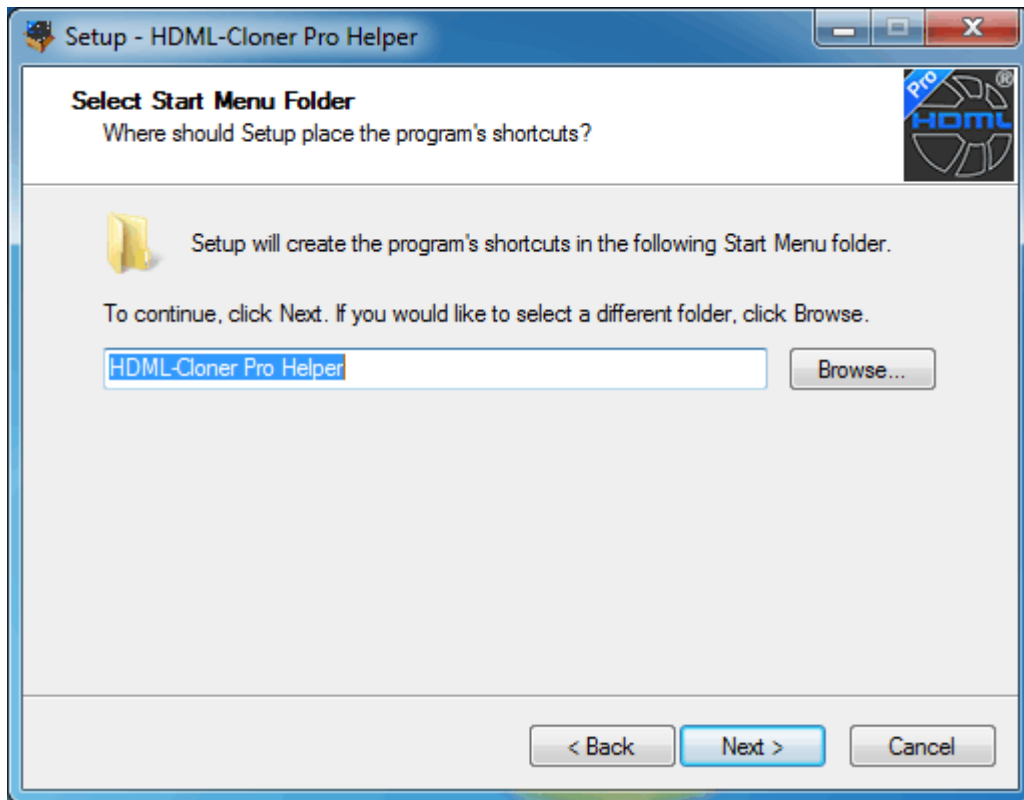
- Next



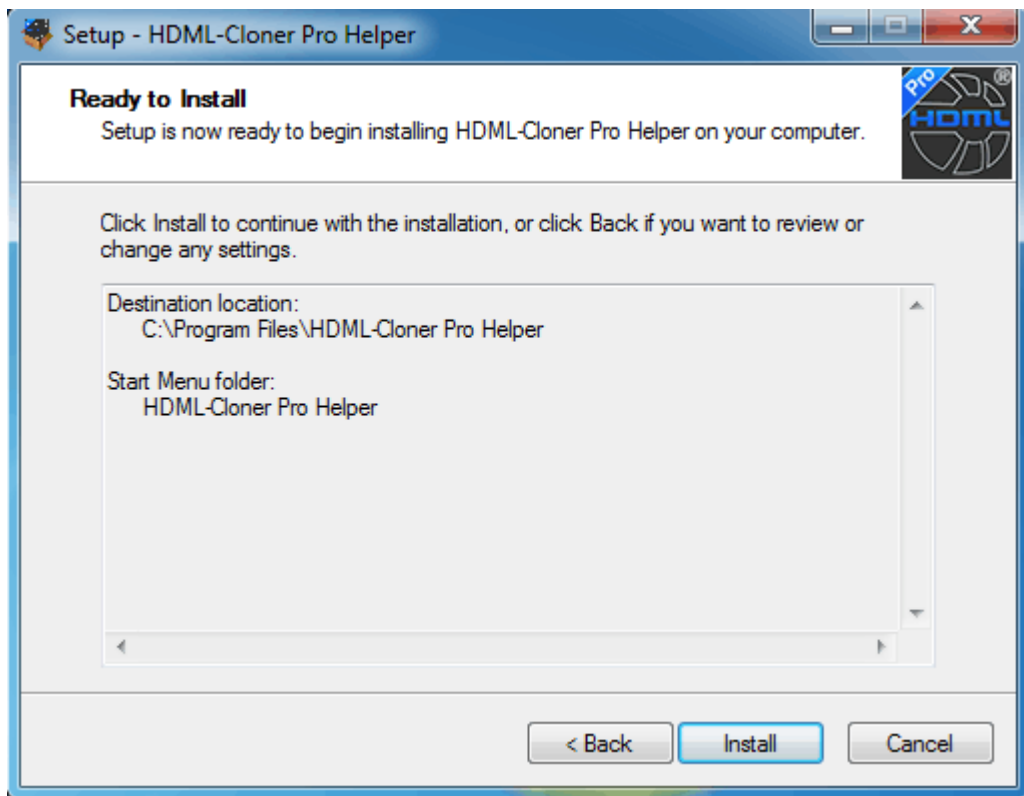
- Next



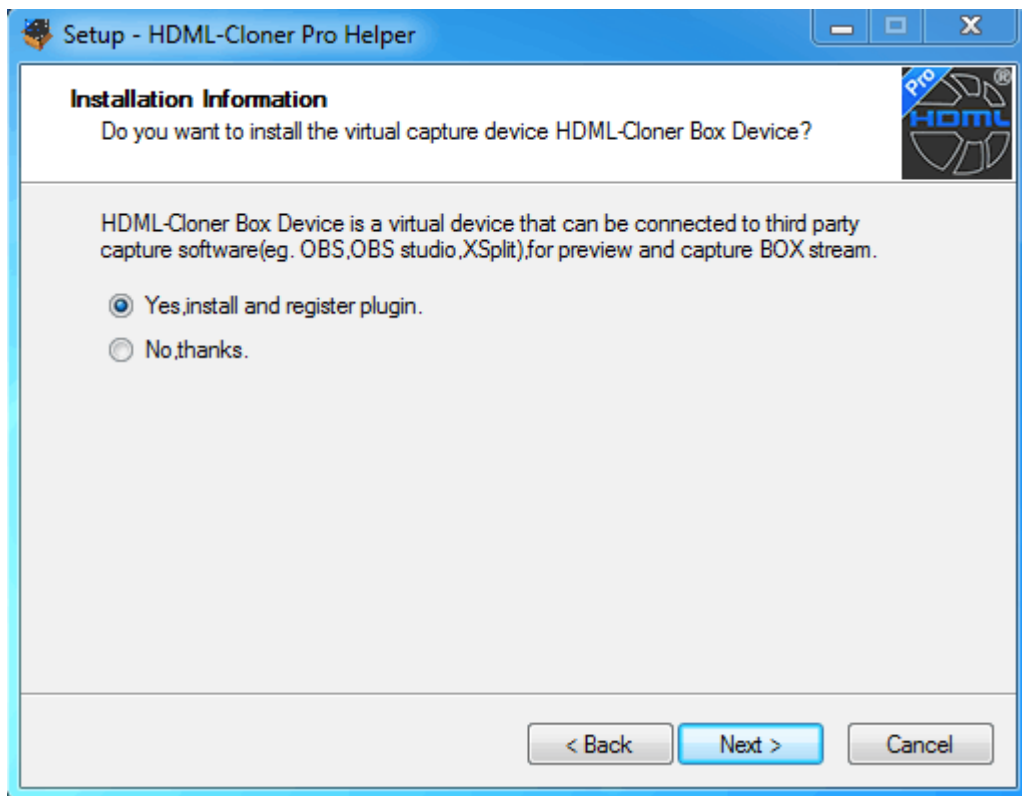
- Next



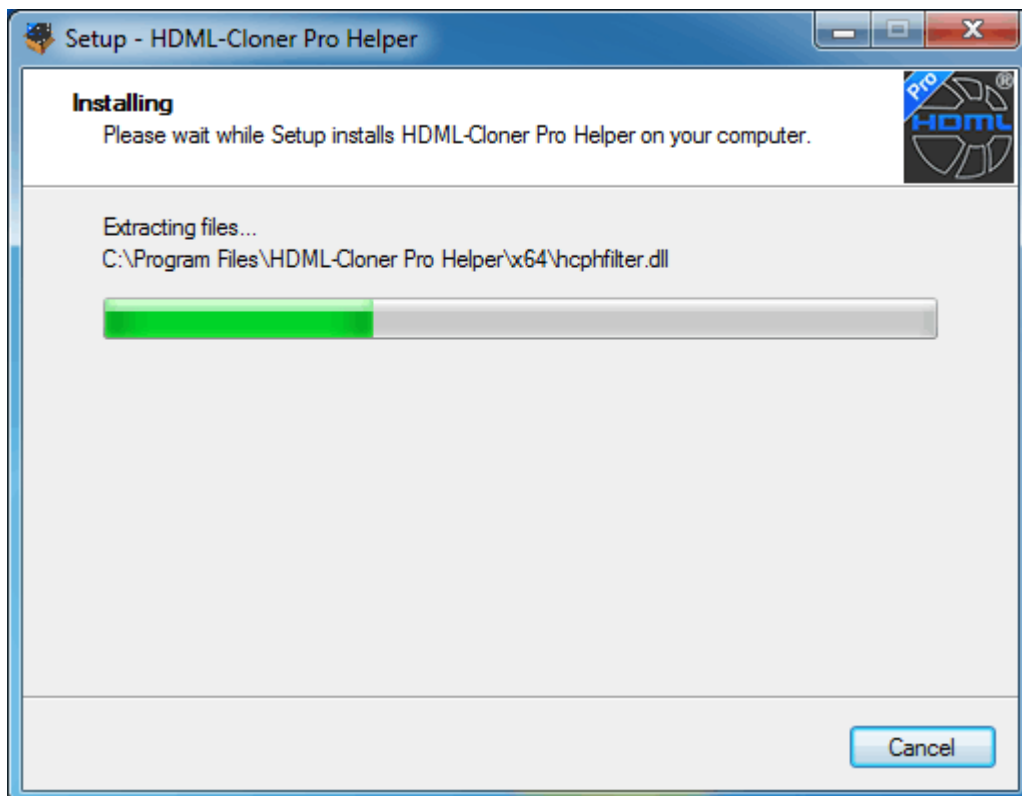
- Install



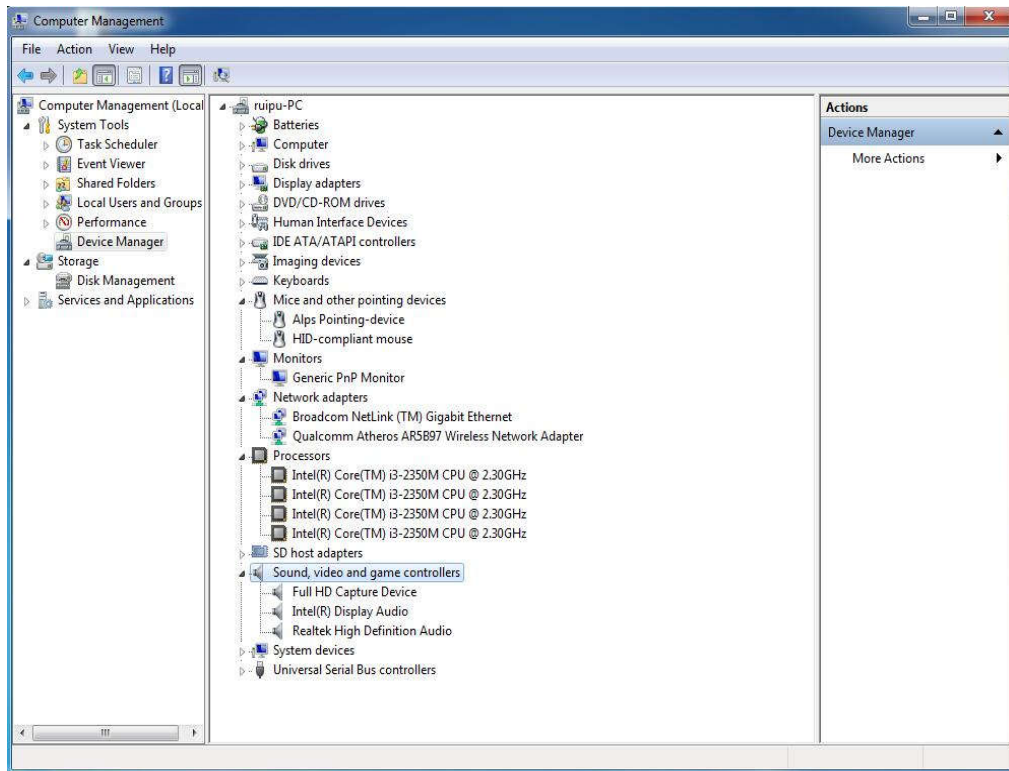
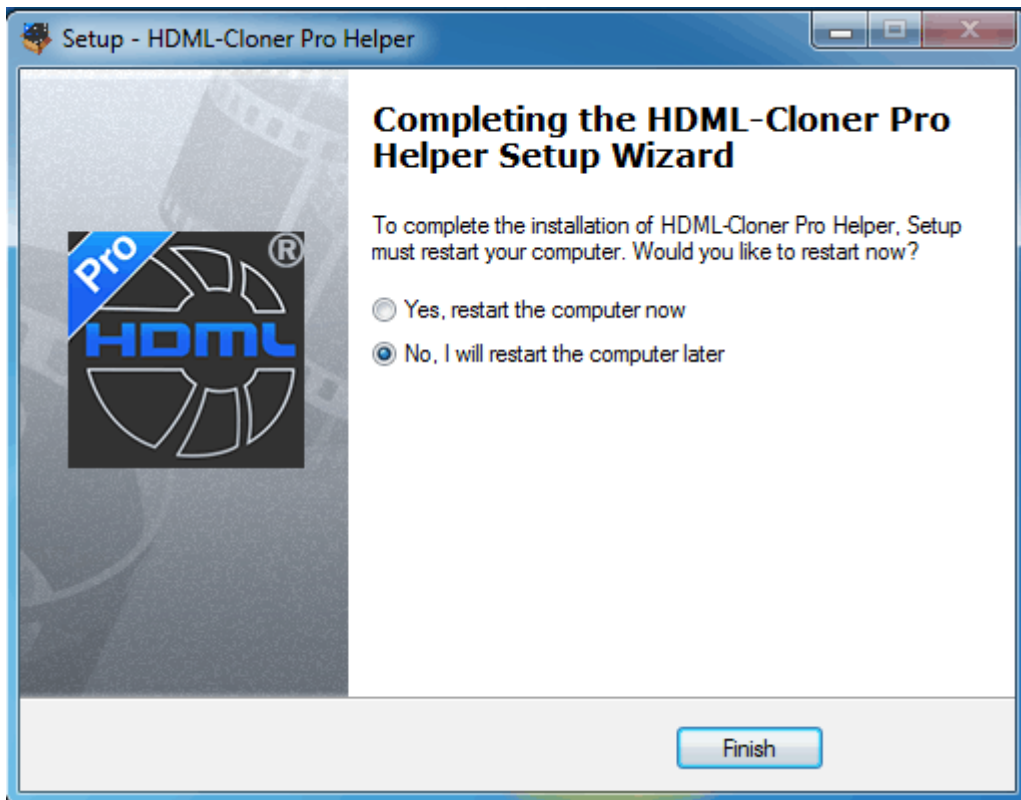
- Next



- Install

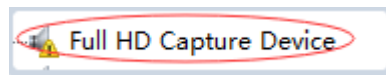


- Finish





二、Win7/bit64 driver attention



If after installation appears this -

Go to MICROSOFT website to download patch of WHQL Win7/bit64, or u can find Windows6.1-KB3033929-x64 in the CD and install it.

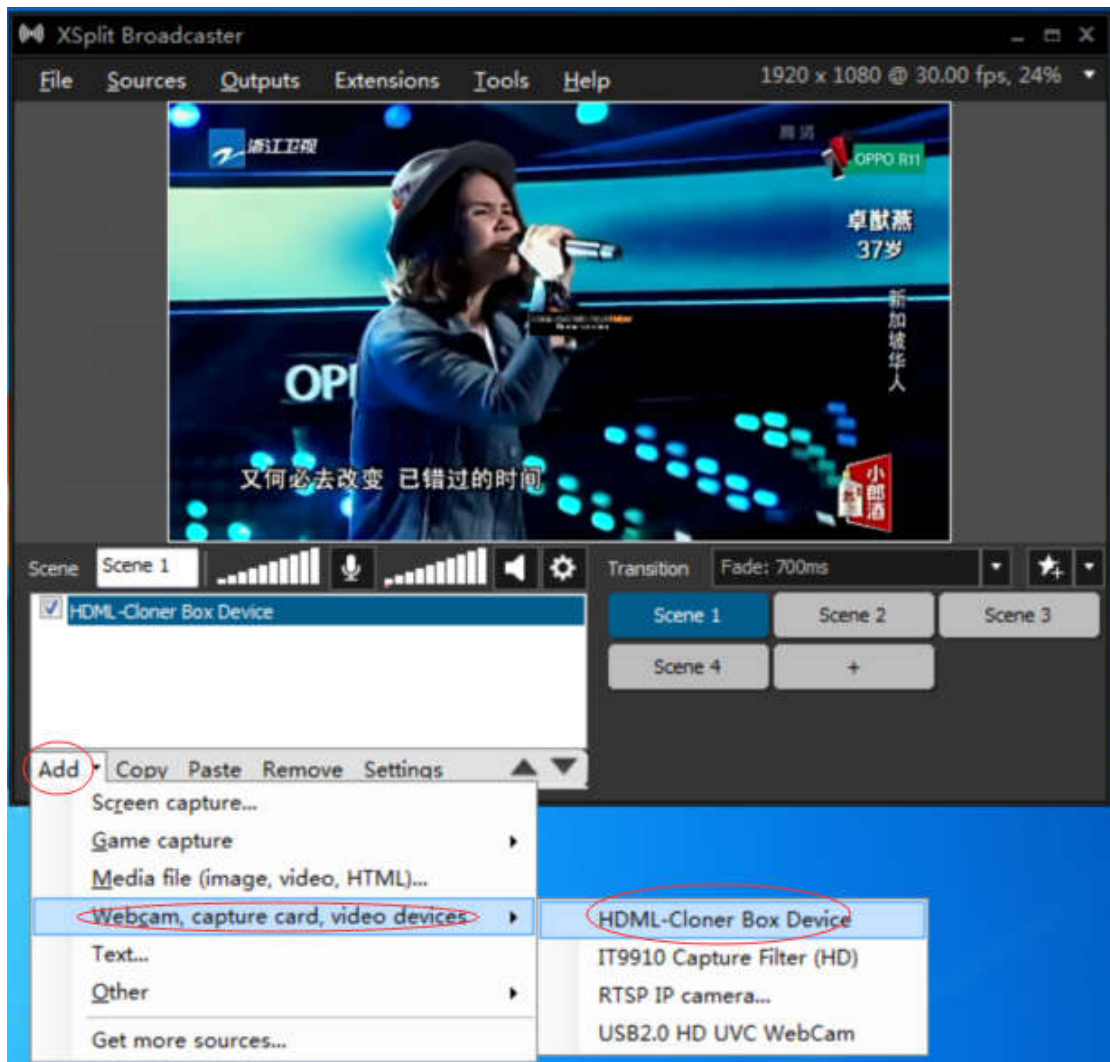
Files Currently on the Disc (3)

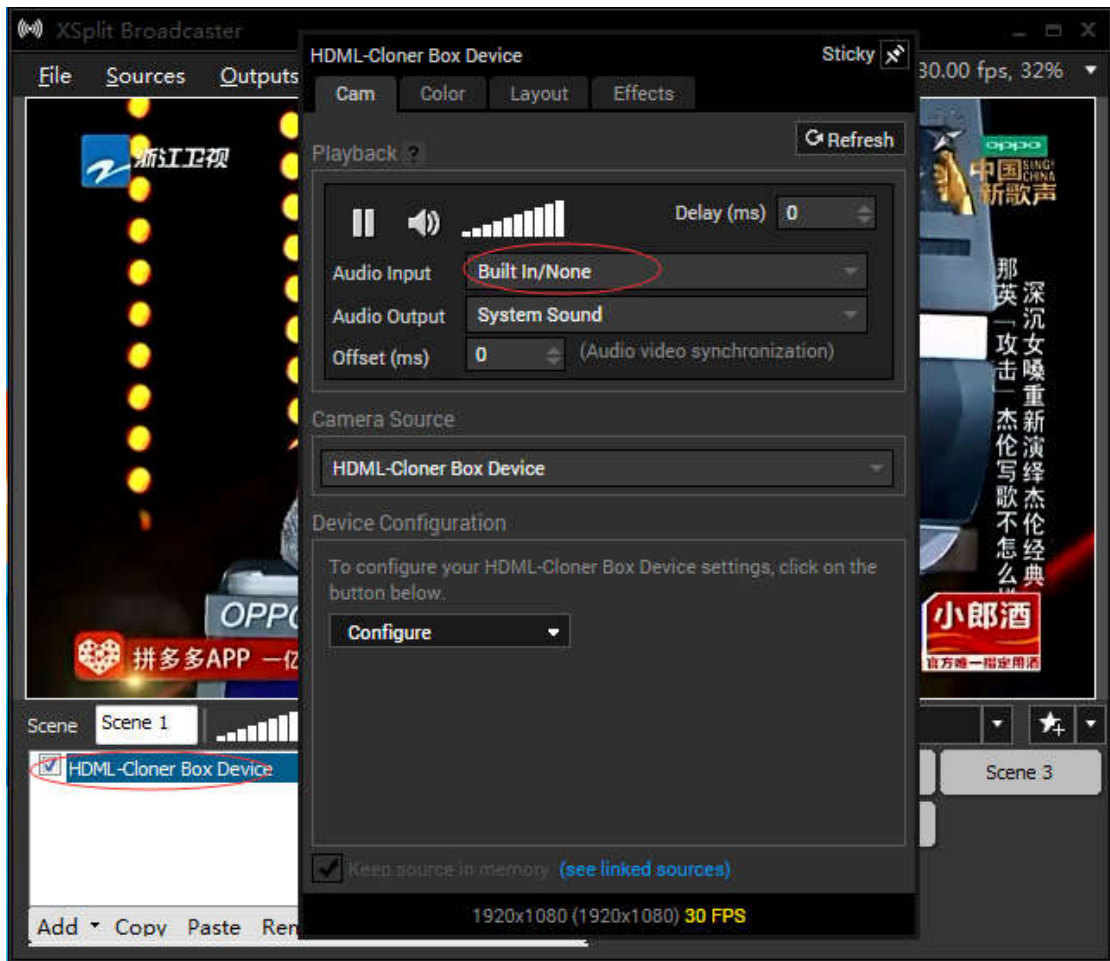
 hdml-cloner-pro20170531	5/31/2017 1:18 AM	Application	20,062 KB
 Users manual	8/8/2017 12:41 AM	Foxit Reader PDF ...	1,283 KB
 Windows6.1-KB3033929-x64	6/20/2016 11:13 PM	Microsoft Update ...	44,843 KB

XSPLIT, OBS, OBS Studio setup instruction

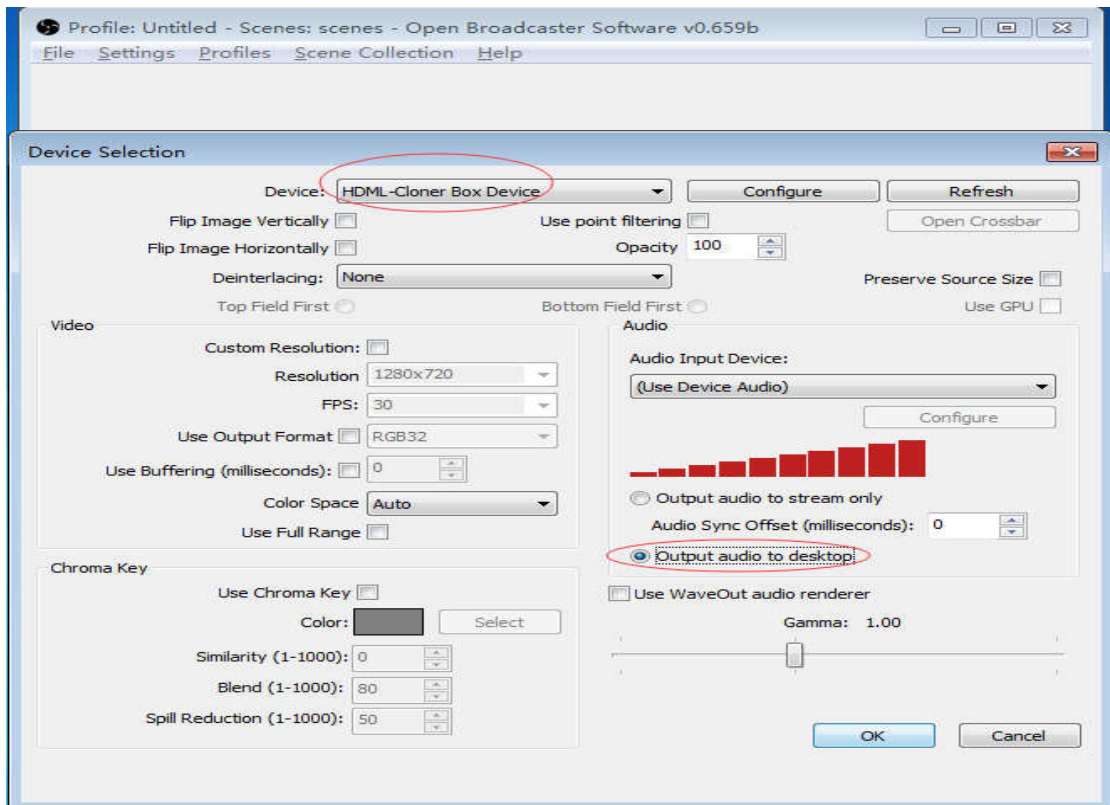
- Video device name: HDML- Cloner Box Device

1. XSPLIT setup



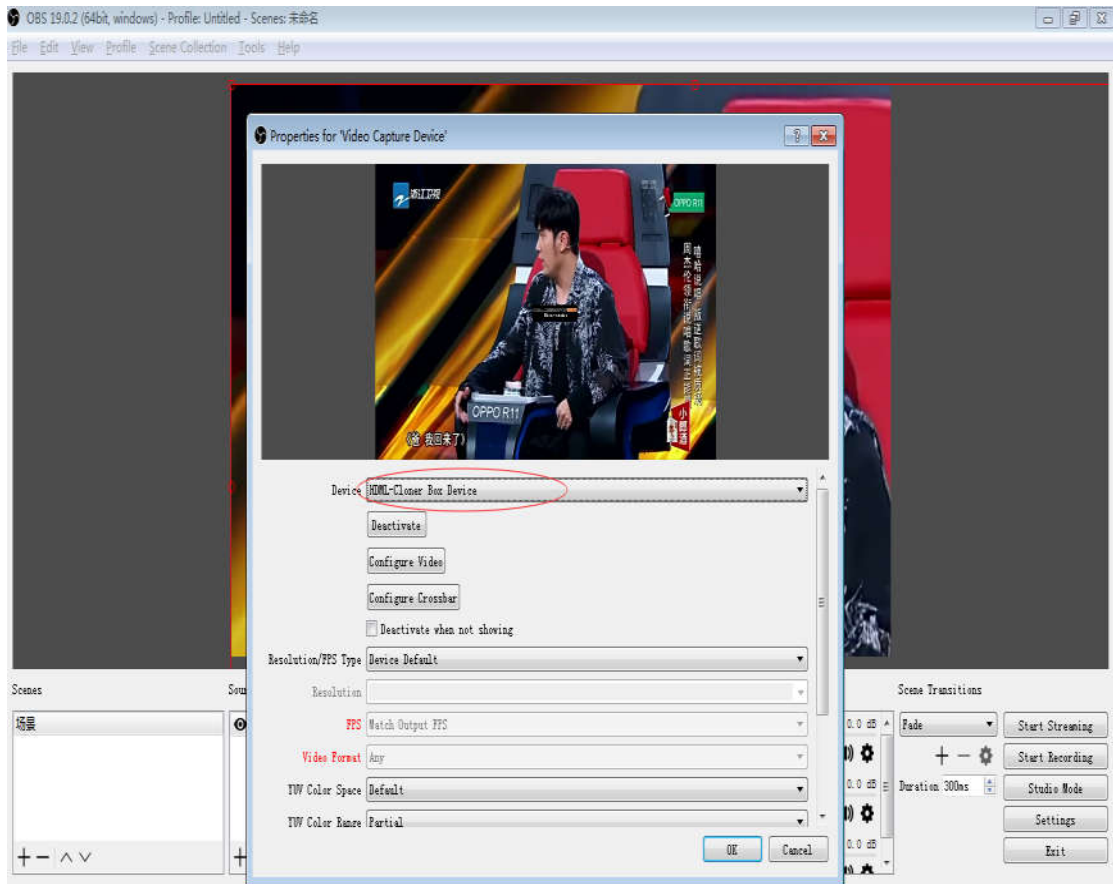


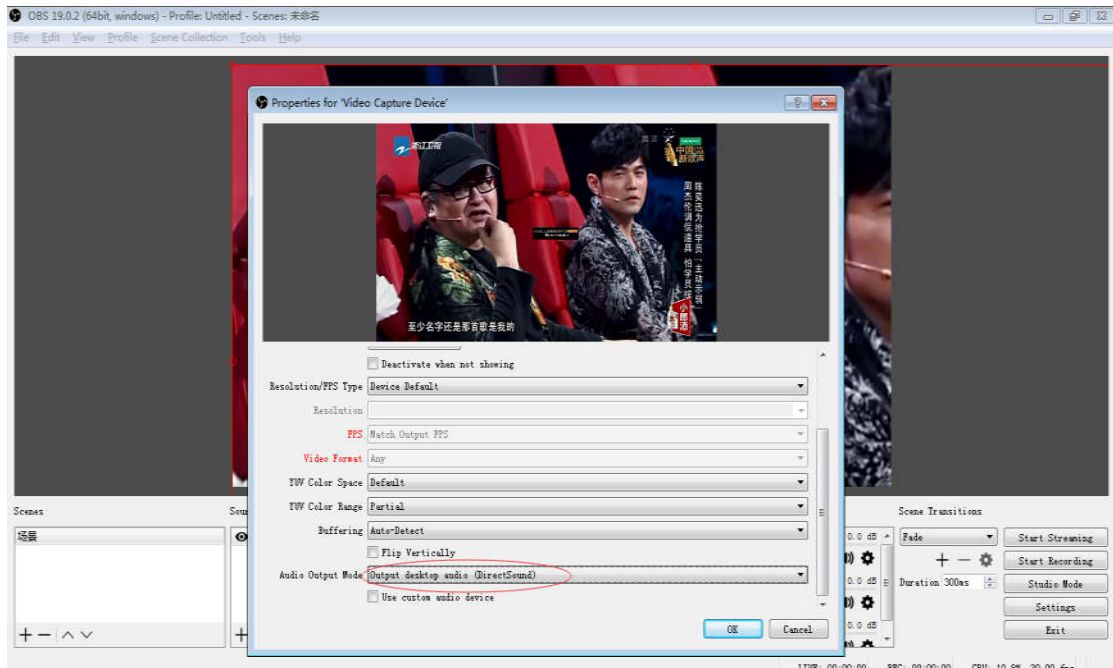
2. OBS setup





3. OBS Studio setup:

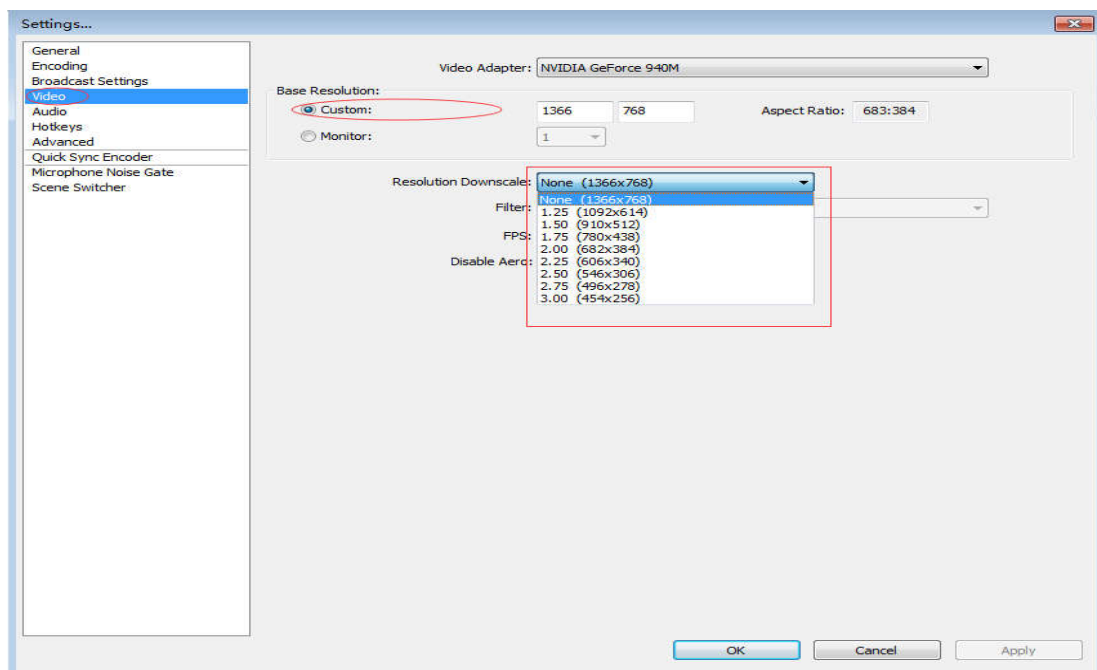


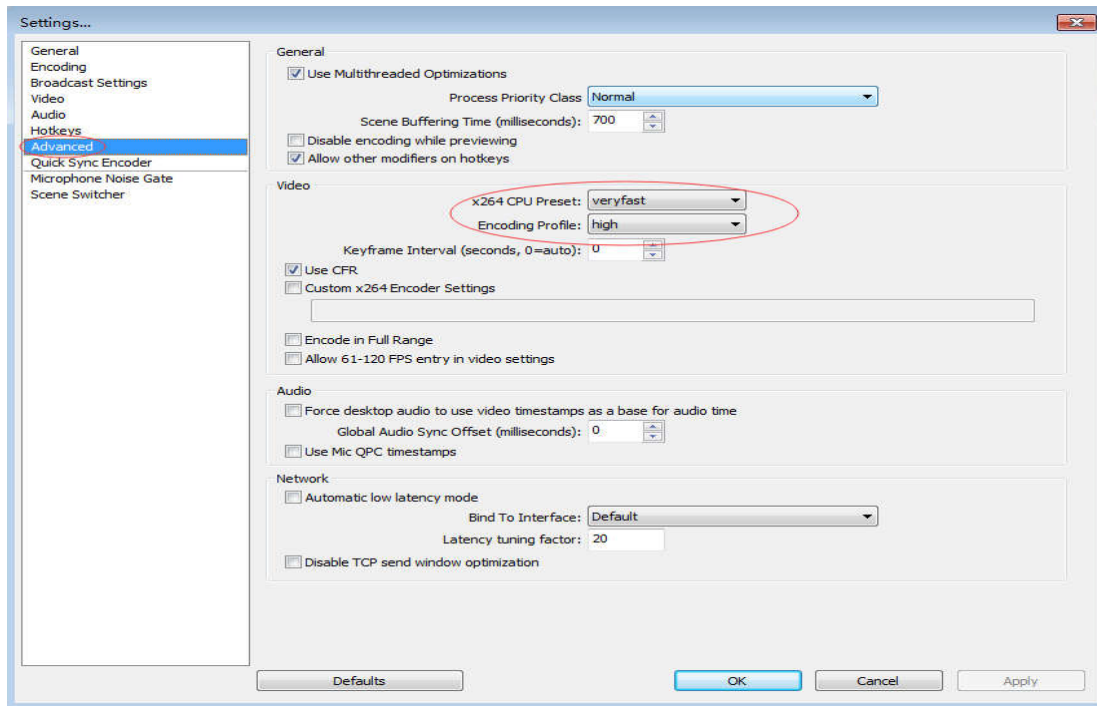


OBS problem solve:

1. PC with core i3 or above CPU
2. If lower than core i3 there will be mosiac, pls change screen resolution

● Open Broadcaster Software :





● OBS Studio :

